

---

# Technical Note: Conext XW/XW+ Compatibility

---

976-0316-01-01  
Rev A

November 2014

## Introduction

The goal of this technical note is to provide the reader with adequate knowledge to plan and take considerations when adding inverter/chargers to a system in which Conext XW and Conext XW+ inverter/chargers are mixed.

## Scope

This technical note is written with the sole purpose of clarifying technical aspects for the Conext series Inverter/Chargers by providing information beyond what is available in the *Conext XW+ Owner's Guide* and *Conext XW+ Installation Guide*. It incorporates the safety information in these guides by reference.

This technical note applies to customers looking to mix Conext XW and Conext XW+ models in a multi-unit system.

The information provided below does not modify, replace or waive any of the terms and conditions mentioned in the installation and owner's guides, including but not limited to the limited warranty.

## Compatibility

Conext XW/XW+ devices running different firmware versions in a multi-unit system will lead to conflicts. Due to this fact, both Conext XW and Conext XW+ units will require the same firmware version to be loaded in order to function properly.

We do not support upgrading Conext XW firmware to Conext XW+ firmware on Conext XW units, therefore we recommend **installing the older Conext XW firmware version on Conext XW+ units for system compatibility.**

The latest firmware version for the Conext XW is **v1.07**. This firmware should be applied to the Conext XW+ when it is residing on the same multi-unit system as the Conext XW.

Please see the *Conext XW+* and *Conext Configuration Tool Owner's Guides* or contact Schneider technical support if you have questions about installing firmware.

## Procedure

1. Obtain and install the *Conext Configuration Tool* software and included dongle (Part # 865-1155-01) if not already installed in the system. The upgrade process below requires these tools.
2. Obtain the latest firmware for the Conext XW. It can be found in the Conext XW section on [www.SEsolar.com](http://www.SEsolar.com). Click Downloads, then click Firmware and select the firmware corresponding to the model of your product. The latest firmware version for the Conext XW is **v1.07**.
3. Refer to Table 1 below to rename the downloaded file from the older XW filename to the new XW+ filename.  
For example, if your firmware filename is **865-1000.01\_07\_00.BN0003.xf0**, rename it to **865-6848-01.01\_07\_00.BN0003.xf0**.

**Table 1** XW/XW+ firmware names

Old Conext XW filename	New Conext XW+ filename
865-1000.01_07_00.BN0003.xf0	865-6848-01.01_07_00.BN0003.xf0
865-1005.01_07_00.BN0003.xf0	865-5548-01.01_07_00.BN0003.xf0
865-1040.01_07_00.BN0006.xf0	865-7048-61.01_07_00.BN0006.xf0
865-1035.01_07_00.BN0005.xf0	865-8048-61.01_07_00.BN0005.xf0

4. Using the Conext Configuration Tool, Click **Configure -> Firmware Upgrade**.

**⚠ WARNING**

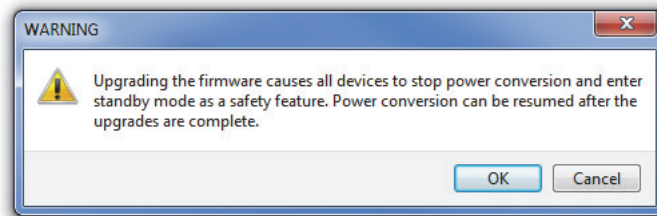
**LIMITATIONS ON USE**

During the firmware upgrade process of any device on the Xanbus network, all units on the network will cease output of power.

Do not use any device on the Xanbus network in connection with life support systems or other medical equipment or devices.

**Failure to follow these instructions can result in death or serious injury.**

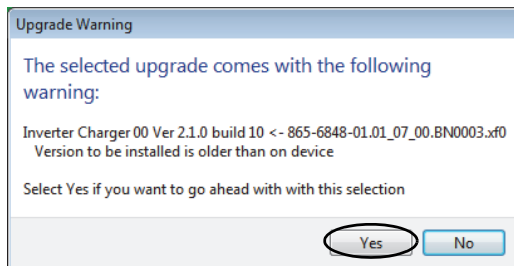
5. A warning box appears as shown below.



**Figure 1** Warning Message

- To proceed with the firmware change, click **OK**.
6. Select the folder that contains your saved firmware file.  
**Note:** Firmware files are listed in order of their version number (oldest to newest). If a file is more recent than the device's version, it is automatically selected. You will need to load a previous version of the firmware in this case.

- To proceed upgrading the selected device, click **Upgrade**. Because you have selected an older firmware version, a warning message may prompt you to proceed.



**Figure 2** Upgrade Warning

- Click **Yes** to proceed. You can now run the Conext XW+ in tandem with the Conext XW units on your multi-unit system.

Copyright © 2014 Schneider Electric. All Rights Reserved. All trademarks are owned by Schneider Electric Industries SAS or its affiliated companies.

**Exclusion for Documentation**

Unless specifically agreed to in writing, seller

(A) MAKES NO WARRANTY AS TO THE ACCURACY, SUFFICIENCY OR SUITABILITY OF ANY TECHNICAL OR OTHER INFORMATION PROVIDED IN ITS MANUALS OR OTHER DOCUMENTATION;

(B) ASSUMES NO RESPONSIBILITY OR LIABILITY FOR LOSSES, DAMAGES, COSTS OR EXPENSES, WHETHER SPECIAL, DIRECT, INDIRECT, CONSEQUENTIAL OR INCIDENTAL, WHICH MIGHT ARISE OUT OF THE USE OF SUCH INFORMATION. THE USE OF ANY SUCH INFORMATION WILL BE ENTIRELY AT THE USER'S RISK; AND

(C) REMINDS YOU THAT IF THIS MANUAL IS IN ANY LANGUAGE OTHER THAN ENGLISH, ALTHOUGH STEPS HAVE BEEN TAKEN TO MAINTAIN THE ACCURACY OF THE TRANSLATION, THE ACCURACY CANNOT BE GUARANTEED. APPROVED CONTENT IS CONTAINED WITH THE ENGLISH LANGUAGE VERSION WHICH IS POSTED AT [WWW.SCHNEIDER-ELECTRIC.COM](http://WWW.SCHNEIDER-ELECTRIC.COM).

**Date:** November 2014

**Contact Information** [www.schneider-electric.com](http://www.schneider-electric.com)

For country details please contact your local Schneider Electric Sales Representative or visit the Schneider Electric website at:

<http://www.schneider-electric.com/sites/corporate/en/support/operations/local-operations/local-operations.page>